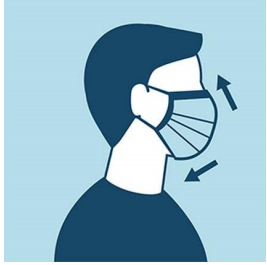


Please Remember



Wear Masks

Face-coverings are to be worn while at the parking lot mass. Children under 2 do not need a mask.



Parking

There will be parking lot attendants providing directions as to where to park. There will be a few people to assist in carrying your lawn chairs for those who need assistance.



Lawn Chairs only

For our outdoor Masses, families will need to bring their own lawn chairs for your family to use.



Seating & Social Distancing

Please enter the lower parking lot from north lot entrance (by the church sign). Ushers will be there to provide masks to those who do not have a mask and direct you to an area to set up your chairs. This is to help us maintain the 6 ft required for social distancing between families.



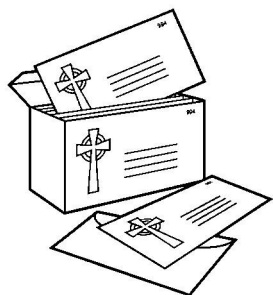
Holy Eucharist

Communion will be distributed ONLY in the hand, not by the cup. Ushers will dismiss each pew. Please maintain the 6ft physical distancing between you and the person in front and behind you.



Sign of Peace

We will not be exchanging the Sign of Peace.



Offertory Collection

A basket/container will be located at the lower parking lot entrance for your envelopes or donations. We thank all those who have been able to give during this unusual time that we find ourselves in.

After Mass

We will be offering drive through Holy Communion from 5:30 -5:45pm for those who are unable to attend the lawn chair Mass. We will need to open up the lower parking lot immediately following Mass. As much as we would like to catch up with everyone, we ask that you return to your cars to help us prepare for the drive through distribution of Holy Communion. Thank you.

